

Supervisor+

Data Collection System

Applications

Based on a modular architecture, Supervisor+ offers many functionalities:

- Automatic meter management (AMM) with a task scheduler
- Data collection automatically or upon request through modem or Ethernet connection
- Automatic export of data to billing systems
- Graphic or tabular visualization of data

Description

Supervisor+ software offers a complete AMM solution which enables the automated acquisition of data from commercial and industrial gas devices through modem, direct link to SMSC (for SMS collection) or Ethernet.

The system collects data through the PSTN, GSM or GPRS/Ethernet networks, and can be flexibly scheduled. Multiple modems can be managed by the host software to improve operations efficiency.

Supervisor + collects both converted and unconverted volume data, which can then be visualized in the system, with a powerful graphical interface.

Automatic scheduled reading and data analysis is simplified with the use of group of devices. A reading operation can be scheduled in all devices of the group as a unique task.

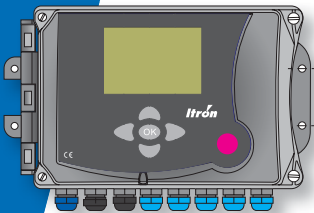
The user can also create a virtual device adding the volume channels of several real devices. By this mean a client with several devices can have a single billing.

Any type of commercial modem associated with insulation barriers can be used in the field connected to our electronic products. Specific modems with intrinsic safety approval (as associated devices) specifically designed for our products can also be used, offering battery powered AMR solutions.

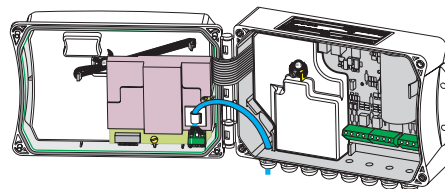
The meter status data is used by the system operator to monitor the metering devices. Data can be exported automatically or manually to utility billing systems or other software in ASCII format.

Supervisor+ is an open system platform that can be extended to include more metering devices and up to 5 clients connected to the data collection server.

A direct connection with SMSC servers provides a flexible operating solution when working with data loggers using SMS to transmit their database, like FOCUS DL. In this case no modem is required to collect data.



> FOCUS+ (GSM/GPRS modem)

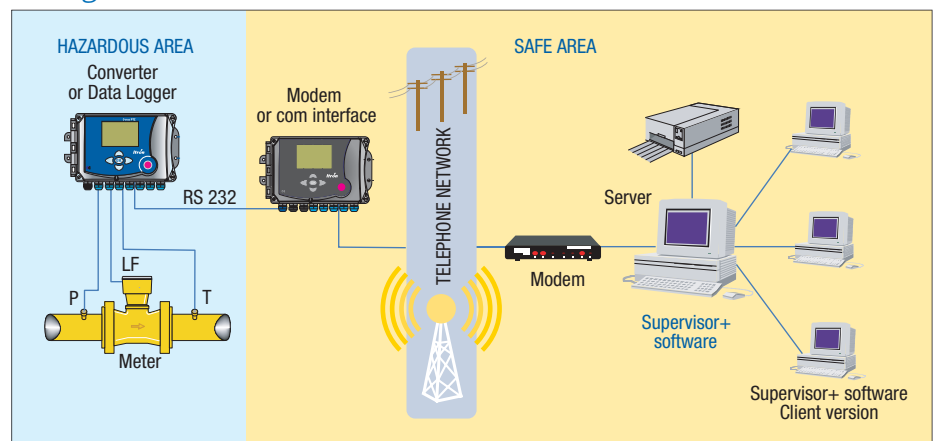


> Internal modem CORUS

Supervisor+ software with:

- > Enhanced graphical/statistic tool under Windows environment
- > SQL compatible database
- > Client/Server architecture
- > Automatic data collection engine with several communication options:
 - Modems GSM / PSTN (up to 8 modems)
 - Direct connection with SMSC servers (for SMS collection)
 - Data collection through Ethernet network (up to 32 ports simultaneously)
- > Remote / Local data programming
- > Export / Import data to billing systems or other software.

Configuration



Main Specifications

Supervisor+

- Based on Windows environment
- Modular architecture
- System configuration
- Device / Group definition
- Virtual device summing the volume channels of real devices
- Communication configuration
- System administration
- Remote / local reading, programming and visualization
- Communication scheduling
- Data visualization / summation
- Event / alarm logging
- On-line alarm reception
- Data import / export
- Direct connection to SMSC
- SQL database
- Automatic database backup
- Client / server architecture with up to 5 users logged simultaneously via LAN to the server for data visualization
- Compatible with commercial modems

Required Hardware Configuration

- PC compatible computer
- Microsoft Windows NT, 2000, XP, Vista
- Pentium III 300 Mhz or superior
- 2 GB hard disk available
- 128 MB RAM
- 1024x768 Display
- 1 CD Rom drive
- Minimum 1 serial port available

Collected Data

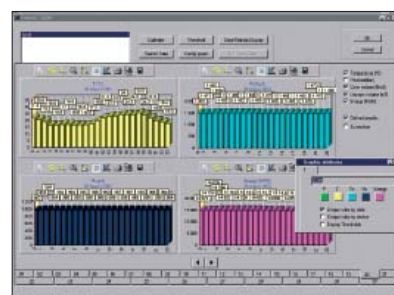
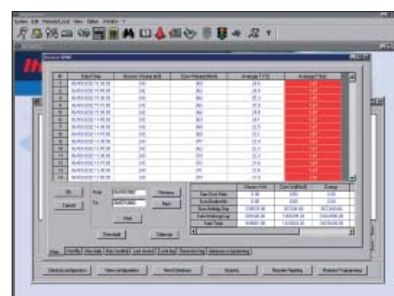
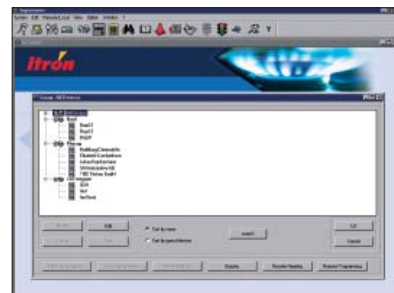
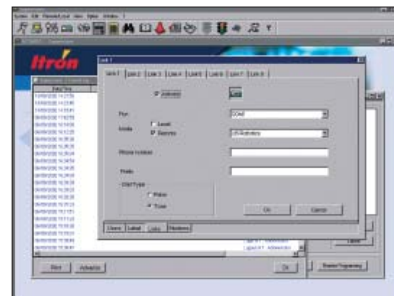
- Converted and unconverted volume
- Instantaneous data
- Event log data
- Device configuration
- Analog data (P & T)
- Either full or part of the device database can be read out

Available field modems and interfaces

- CORUS internal modem
- FOCUS GSM modem
- FOCUS+ (GSM / GPRS) modem
- Sparkline modem (PSTN, ISDN, GSM, GPRS)
- Other commercial PSTN, ISDN, GSM or GPRS modems
- Other commercial interface (Ethernet, radio)

List of devices managed by S+

- | | |
|--------------|----------------|
| > Converters | > Data Loggers |
| - CORUS | - FOCUS DL |
| - SEVC-D | - Sparklog |



About Itron Inc.

Itron Inc. is a leading technology provider to the global energy and water industries. Our company is the world's leading provider of metering, data collection and utility software solutions, with nearly 8,000 utilities worldwide relying on our technology to optimize the delivery and use of energy and water. Our products include electricity, gas and water meters, data collection and communication systems, including automated meter reading (AMR) and advanced metering infrastructure (AMI); meter data management and related software applications; as well as project management, installation, and consulting services. To know more, start here: www.itron.com

For more information, contact your local sales representative or agency.



Itron France

Rue des Temps Modernes - BP 23
86361 Chasseneuil-du-Poitou Cedex
France
Phone: +33 (0)5 49 62 70 00
Fax: +33 (0)5 49 62 70 89
www.itron.com